



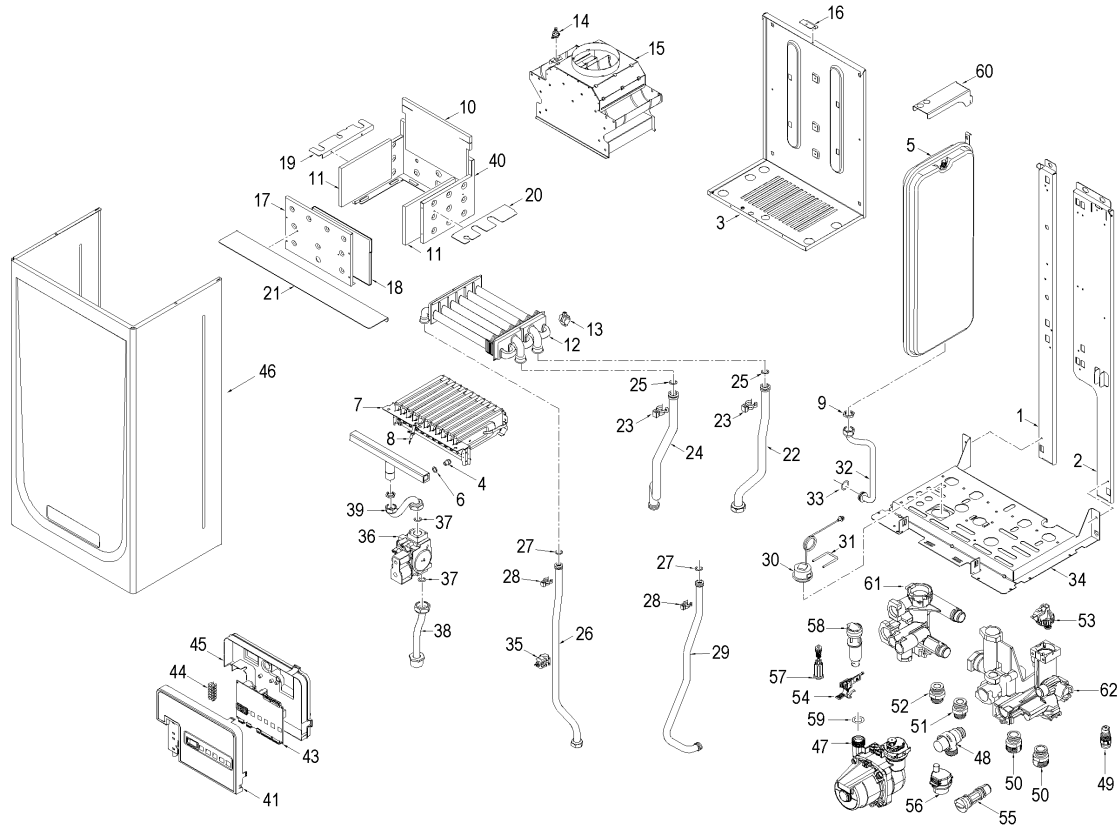
Fonderie Sime S.p.A. - Via Garbo, 27 - 37045 Legnago (VR) - [www.sime.it](http://www.sime.it)  
 Tribunale Verona 13531 - R.E.A. VR 171357 - C.C.P. 19423375 - N° Mecc. VR 014435  
 Capitale Sociale Euro 5.521.200 int. versato - Codice Fiscale/Partita IVA n. IT 01275930236

Comfort Ambiente - Via Garbo, 27 - 37045 Legnago (VR)

Tel +39 0442 631111 - Fax Servizio Commerciale: Italia +39 0442 631291 - Estero +39 0442 631293

Fax Servizio Tecnico +39 0442 631292 - Fax Ufficio Acquisti +39 0442 631292 - Fax Amministrazione +39 0442 631336

8107800 CALD.MET. METROPOLIS DGT 25 OF



| Posiz. | Codice  | Descrizione                     |                            |
|--------|---------|---------------------------------|----------------------------|
| 001    | 6318350 | Left hand side frame part       |                            |
| 002    | 6318300 | Right hand side frame part      |                            |
| 003    | 6317650 | Rear panel                      |                            |
| 004    | 6154402 | Main burner nozzle NP 130 natur | <b>METANO</b>              |
| 005    | 5183724 | Rectang. expansion vessel 8 l.  |                            |
| 005A   | 5183726 | Rectang. expansion vessel 8 l.  | <b>DA MATR. 4045301234</b> |
| 006    | 6022004 | Copper washer Ø 6               |                            |
| 007    | 5198260 | Main burner assembly            |                            |
| 008    | 6235932 | Ignition-ionisation electrode   |                            |
| 009    | 6146330 | Nut 1/2" for expansion vessel   |                            |
| 010    | 6318721 | Combustion chamber rear insulat |                            |
| 011    | 6318710 | Combustion chamber side insulat |                            |
| 012    | 6174260 | Gas/Water heat exchanger        |                            |
| 013    | 6231362 | NTC sensor                      |                            |
| 014    | 6146712 | Smoke switch                    |                            |
| 015    | 5167590 | Smoke chamber assembly          |                            |
| 016    | 6073350 | Smoke chamber mounting bracket  |                            |
| 017    | 6317950 | Combustion chamber front panel  |                            |
| 018    | 6318701 | Combustion chamber side insulat |                            |
| 019    | 6276620 | Smoke chamber L.H.S. closure    |                            |
| 020    | 6276520 | Smoke chamber R.H.S. closure    |                            |
| 021    | 6276720 | Smoke chamber front closure     |                            |
| 022    | 6264842 | C.H. return pipe                |                            |
| 023    | 6226601 | Spring for heat exchanger conne |                            |
| 024    | 6264774 | C.H. flow pipe                  |                            |
| 025    | 6226412 | O-ring 3068                     |                            |
| 026    | 6227017 | D.H.W. outlet pipe              |                            |
| 027    | 6226444 | O-Ring Ø 13,64 x 2,62           |                            |
| 028    | 6226617 | Spring for heat exchanger conne |                            |
| 029    | 6227116 | D.H.W. inlet pipe               |                            |
| 030    | 6146111 | Hydrometer                      |                            |
| 031    | 6226628 | Hydrometer Fixing spring        |                            |
| 032    | 6017311 | Flexible pipe L=250             |                            |

|      |         |                                 |                      |
|------|---------|---------------------------------|----------------------|
| 032A | 6227692 | Pipe connecting expans. vessel  | DA MATR. 4045301234  |
| 033  | 6226464 | O-ring 115 diam. 11,91x2,62     |                      |
| 034  | 6318010 | Frame assembly lower side       |                      |
| 035  | 6231357 | D.H.W. temperature sensor       |                      |
| 036  | 6243833 | Gas valve                       |                      |
| 037  | 2030228 | Gasket Ø 17x24x2                |                      |
| 038  | 6226884 | Gas inlet pipe                  |                      |
| 039  | 6226958 | Pipe conn. gas valve to burner  |                      |
| 040  | 6318550 | Combustion Chamber front panel  |                      |
| 041  | 6304751 | Control panel                   |                      |
| 043  | 6301420 | Main P.C.B.                     |                      |
| 044  | 2211010 | Terminal strip                  |                      |
| 045  | 6305050 | Control panel cover             |                      |
| 046  | 6317831 | Casing                          |                      |
| 047  | 6272309 | Circulating pump                |                      |
| 048  | 6040211 | Pressure relief valve 3 bar     |                      |
| 049  | 6319603 | Discharger cock                 |                      |
| 050  | 6120533 | C.H Nipple                      |                      |
| 051  | 6120532 | D.H.W. Nipple                   |                      |
| 052  | 6120534 | D.H.W. Nipple exit              |                      |
| 053  | 6037504 | Water pressure switch           |                      |
| 054  | 6319601 | Sensor hall complete            |                      |
| 055  | 6319640 | By-pass                         | FINO MATR.4037300508 |
| 055A | 6319641 | By-pass 2 (new)                 | DA MATR. 4037300509  |
| 056  | 6013182 | Automatic air vent              |                      |
| 057  | 6319634 | Filling cock                    |                      |
| 058  | 6319633 | Flowmeter without reg. of capac |                      |
| 059  | 6226457 | O-ring 12bis diam. 16x1,90      |                      |
| 060  | 6267112 | D.H.W. expans. vessel locking b | FINO MATR.4045301233 |
| 061  | 6319697 | D.H.W. Technyl manifold group   |                      |
| 062  | 6319696 | C.H. Technyl manifold group     |                      |
| 701  | 5197970 | Complete control panel          |                      |
| 703  | 6316255 | 6 pole Stocko connector CN6     |                      |
| 704  | 6316253 | 9 pole Stocko connector         |                      |
| 705  | 6316256 | 14 pole Stocko connectorCN4     |                      |
| 707  | 6319699 | Split pin kit for hydraulic gro |                      |
| 708  | 6319698 | O-ring kit for hydraulic group  |                      |
| 709  | 6281534 | Gaskets kit                     |                      |
| 713  | 5144722 | L.P.G. conversion kit           |                      |
| 714  | 6281506 | O-ring kit for hydraulic group  |                      |
| 715  | 6319695 | Murelle-Format-.....o-ring kit  |                      |
| 716  | 5198390 | Technyl hydraulic group         |                      |
| 717  | 8076110 | Expas.major vassel ZILMET       | FINO MATR.4045301233 |
| 719  | 6211792 | Hydraul. group Bitron caps kit  |                      |